



Ornamental Applique

Quilt Designs by
Jenifer Buechel

Ornamental Applique

*Welcome
Applique Friends!*

*Here's your new 2005 applique
pattern catalog from Ornamental
Applique! Inside you will find all of the
newest patterns as well as the
older favorites. Don't forget to visit-
www.ornamentallaplique.com
to see all of the pattern collections
in full color as well as more detailed
information. . Enjoy browsing
and I hope to hear from you soon!*



Jeni Buechel

6496 Simmons Ave.

South Park, PA 15129

Phone- 412-835-0916 Fax: 412-835-5403

E-mail: jeni@ornamentallaplique.com

www.ornamentallaplique.com

New Book
Series for 2005!

Rhapsody



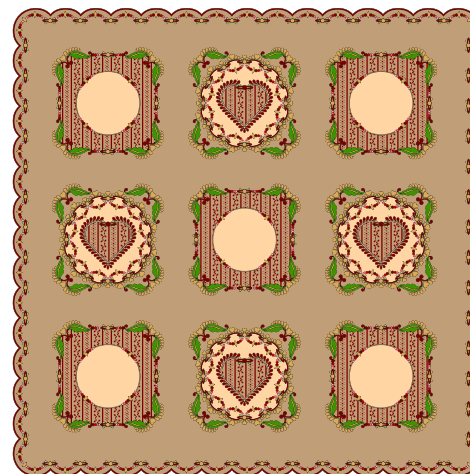
Volume 1

Jeni Buechel

Rhapsody Volume 1- \$20.00

This collection of books will be released on a bimonthly basis. Individual volumes will retail for \$20.00, but for a limited time you can pre-order all five volumes for the discounted price of \$75.00 and they will be automatically shipped to you as they are released.

Volume 1 is available right now Volume 2- August 2005
Volume 3- October 2005 Volume 4- December 2005
Volume 5- February 2006

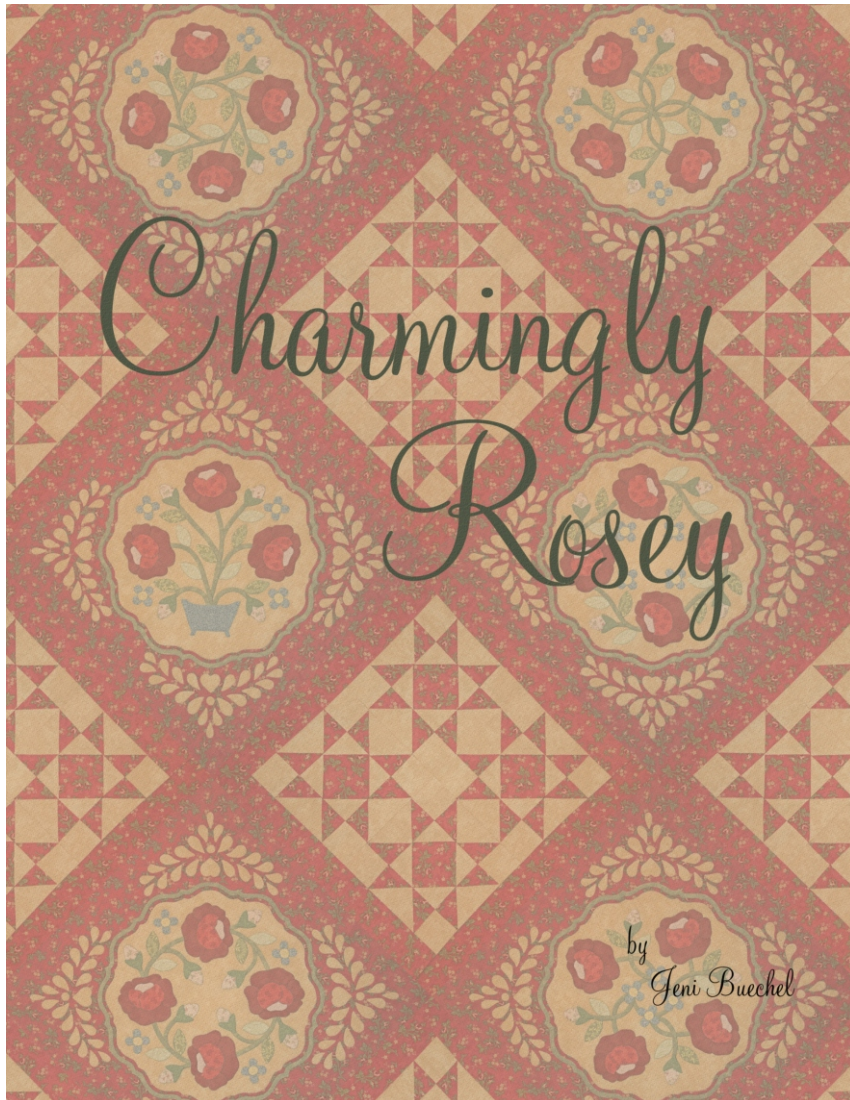


dimensional flowers, silk ribbon embroidery and a variety of embellishment techniques.



Each Volume Includes-

- ☞ Full size Pull-Out Pattern Pages for two quilt blocks***
 - ☞ Complete instructions for the frames - Basic applique and reverse applique
 - ☞ Complete templates and instructions for all the dimensional applique
 - ☞ Silk Ribbon embroidery stitch guide
 - ☞ Lots of hints and tips to help you along
- (***Volume 5 contains Block 9 and the quilt border)



*New Book for
2005!*

Book Includes-

- Twelve different framed, rose applique patterns
- Full size templates for pieced blocks
- Complete instructions for frame assembly
- Basic applique and reverse applique
- Lots of hints and tips to help you along

Very traditional rose blocks, a decorative circular frame and (“Oh my!”) pieced Ohio Stars are the foundation for this new quilt design. It’s all about choices...

The twelve applique motifs are a variety of wreathes and bouquets all using the same repeating rose and flowers to achieve a very traditional album look. Each of these are framed with a scalloped circular frame and reverse applique feather motif. On its own, this makes a very nice quilt design, but set the blocks on the diagonal and add alternating pieced blocks and you a much more interesting quilt!

It's all about choices, diagonal setting or straight, frame or no frame, reverse applique corners or not, you decide... Customize your quilt to suit your taste. No matter how you decide to layout your quilt you can rest assured it will be "Charming"!

Charmingly Rosy Book- \$20.00



Quilt to the right was
stitched by
Mary Anne Lipinski



An Affectionate Offering

Victoriana is at its best with every element- from a delightful pair of doves perched within the branches of a tree, laden with silk ribbon roses and flowers and the irresistibly perfect touch-- tied with a bow, to the elaborate frame that surrounds this little motif. I had been saving this motif, inspired by a very pretty calling card, until the ideal setting occurred to me. A small piece of Yuwa fabric came to the rescue. Deep rich reds, gray greens and gold in the left and right insets determined the color palette for this project and the exquisite roses within the print inspired the frame.

The wallhanging measures 20" x 24"

New Book!

Book Includes-

- Full size Pull-Out Pattern Pages
- Complete instructions for frame
- Basic applique and reverse applique
- Silk Ribbon embroidery stitch guide
- Lots of hints and tips to help you along

Book; \$20.00

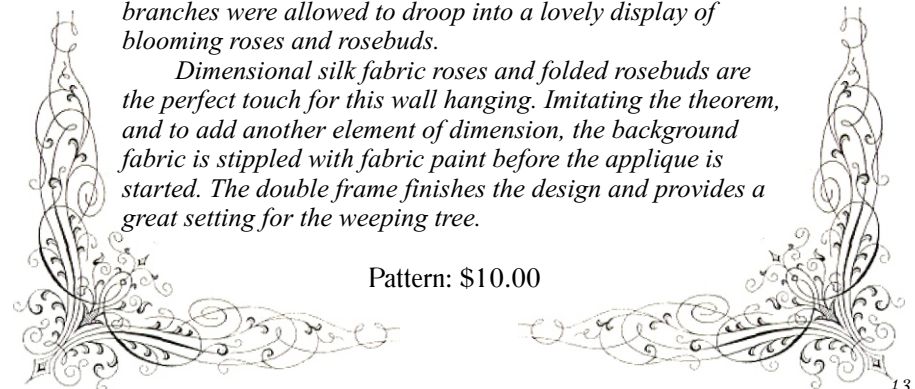


This elegant wall hanging was inspired by two things, an antique theorem painting and the delicate rosebud wreaths in the Baltimore Album quilts.

The Victorian people had a great love for gardening. Many hours were spent creating and grooming topiaries for their garden displays. Training roses to form different shapes, such as a weeping tree, was just one of the many variations. Different varieties of roses or different colors of the same rose would be coaxed to twine up a common stem and then the branches were allowed to droop into a lovely display of blooming roses and rosebuds.

Dimensional silk fabric roses and folded rosebuds are the perfect touch for this wall hanging. Imitating the theorem, and to add another element of dimension, the background fabric is stippled with fabric paint before the applique is started. The double frame finishes the design and provides a great setting for the weeping tree.

Pattern: \$10.00





A Little Guide to Needleturn Applique



"A Little Token of Affection" -

A Victorian Calling Card Pattern

You asked for it and now it is here! This handy little needleturn applique guide was written with you in mind. Whether you are an beginning appliquer or have lots of applique experience there will be something in here for everyone.

It will take you step by step through my process from start to finish and includes many of the little tricks and tips I use. Clearly written instructions and detailed close up photographs that show every step along the way will explain just what you need to know.

Use your newly discovered talent to become an avid applique fan!

This guide includes every step in the applique process from choosing and marking your fabrics.....



To— exactly what to do with your needle, described along with closeup photo's that actually let you see each step!



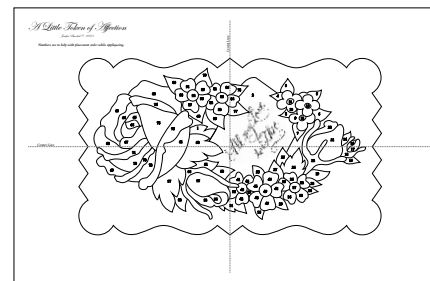
Even tips for helping you ink the sentiment on your block and how to approach layered applique.



The full size pattern for the applique block is included within the guide so you can create your own Victorian Calling Card as you follow along with the instructions. In addition all of the appliques are numbered to help you with placement while you stitch.

This could become an indispensable help no matter which pattern collection you have fallen in love with!

Calling card is approximately 12" x 8" applied to a 16 1/2" background square.



A Little Guide to Needleturn Applique

\$8.00





Victorian Calling Card

Collection 1 and Collection 2

25 Patterns in all

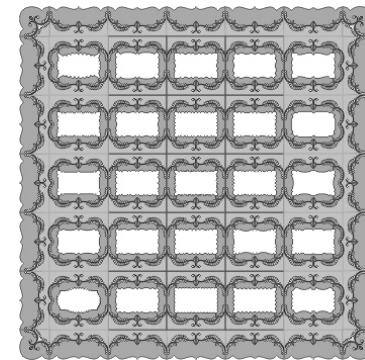
During the Victorian era, a common tradition was to leave a small card, (about the size of our business cards), at the home of the people whom you were paying a social call. Each card contained the name of the caller, sometimes on a plain white card and elegantly scripted. Other calling cards were very ornate, often embossed, cards containing a "hidden" signature. These cards were made from a heavy card stock and often had ornate scalloped



edges. Each would have a "scrap" or a die cut illustration attached to the card at one side and you would lift it to reveal the name of the caller beneath.

These die cut designs were very colorful motifs, containing a lithographed illustration and usually some sort of sentiment. If you are familiar with Baltimore Album block designs, you will recognize the motifs of baskets and urns of flowers, a profusion of roses, birds and wreaths.

Each block has it's own scallop-designed calling card "mounted" in the center of a 16", (finished size), background square, with a detailed applique motif based on a true calling card. Wheelbarrows of roses and pansies, humming birds nesting in trees, clipper ships, albums with sprays of flowers, baskets full of blossoms, and many featuring doves are just a few of the motifs included in the series. All of the designs come with a full size pattern sheet with numbered order of applique placement, and complete instructions for making the block. They also include the



Collection 1- Patterns 1-12

Collection 2- Patterns 13-25

Individual patterns- \$5.00 (*please specify pattern number*)

Complete Collection 1 or Collection 2- \$60.00 each

Purchase both collections at the same time
and **save more-** \$100.00, (*that's \$4.00 a pattern!*)

Either collection can be shipped as a
Block-of-the-Month selection at \$5.60/month (includes shipping)

Victorian Calling Card

Collection 1



Pattern 1



Pattern 2



Pattern 3



Pattern 4



Pattern 5



Pattern 6



Pattern 7



Pattern 8



Pattern 9



Pattern 10



Pattern 11



Pattern 12



Victorian Calling Card

Collection 2



Pattern 13



Pattern 14



Pattern 15



Pattern 16



Pattern 17



Pattern 18



Pattern 19



Pattern 20



Pattern 21



Pattern 22



Pattern 23



Pattern 24



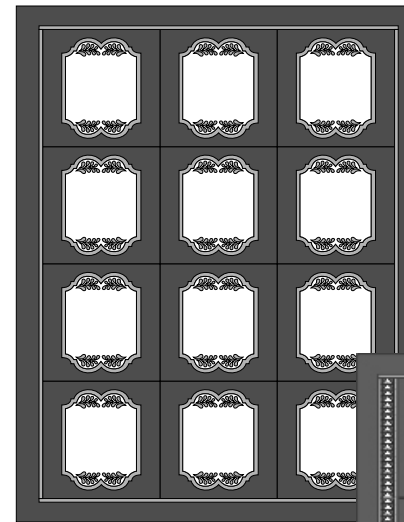
Pattern 25



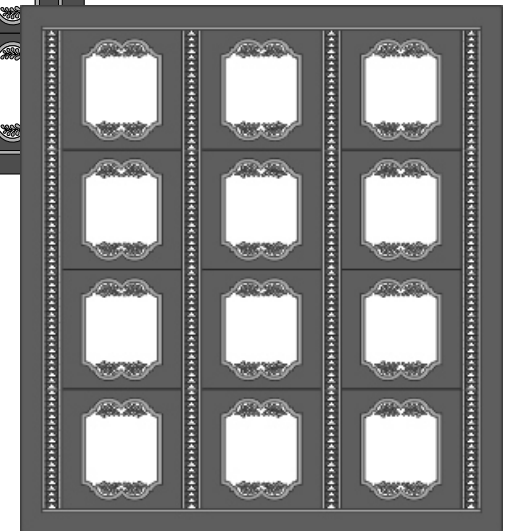
A Pennsylvania Heritage

A Collection of 12 Appliqued Fraktur Designs

Celebrate the heritage and legacy of 18th and 19th century Pennsylvania German folk art with this collection of twelve, 20" applique designs. Each quilt block showcases a different stylized tulip, set among traditional motifs such as hearts, distlefinks and baskets. Surrounding each applique motif is a unique frame setting that mimics an inset from period furniture. This is further enhanced with a reverse applique, feather swag at both the top and the bottom of the frame.



Further compliment your quilt setting by adding optional rows of vertical flying geese sashing. These enhance the traditional Pennsylvania German fraktur style by adding a geometric element to the overall look.



Each Pattern includes:

- Supply list for each album block and the entire quilt
- Full size pattern
- Detailed instructions
- Sashing templates and Finishing suggestions

Individual Block Patterns: \$5.00 each
(please specify pattern number)

Complete Collection (1- 12): \$55.00
(receive one free pattern)

This collection is available as a
Block-of-the-Month selection
at \$5.60/month (including shipping)





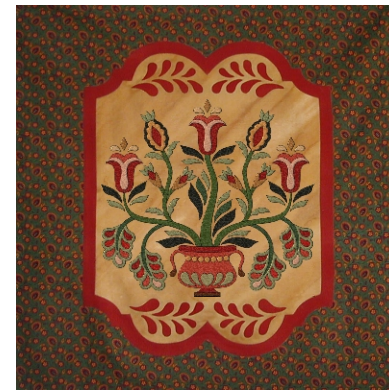
Pattern 1



Pattern 2



Pattern 7



Pattern 8



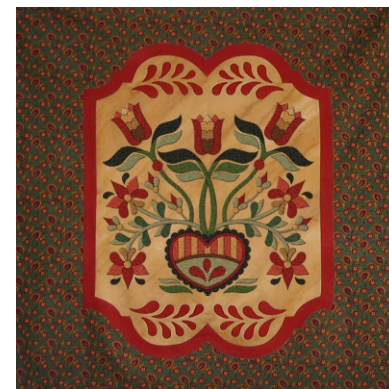
Pattern 3



Pattern 4



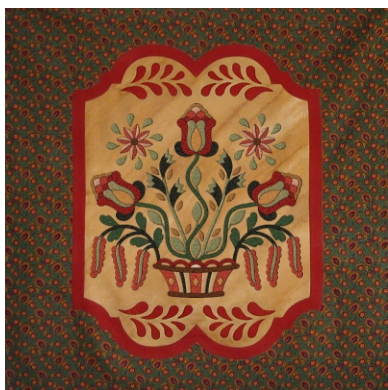
Pattern 9



Pattern 10



Pattern 5



Pattern 6



Pattern 11



Pattern 12





Petite Ribbonry



A Collection of Twelve Silk Ribbon Album Patterns

Silk ribbon embroidered bouquets comprise the perfect motifs to nestle in these petite applique frames. Each of the 12" applique and silk ribbon embroidered album blocks feature a variety of different embroidery stitches for both silk ribbon and other "fancy" threads.

Each pattern includes a supply list, full size pattern for the applique block, stitch key, and guide for making all the stitches.

Whether you make just one of these petite treasures for display, or complete all twelve in the collection as a small quilt, you are sure to enjoy the fruits of your labor!

Individual Patterns~ \$5.00 each

Complete Pattern Collection 1-12~ \$40.00

Companion Silk Ribbon kits are available and cut to order.
Ribbon colors will be similar to samples shown. Fabrics not included.



Pattern 1

Silk Ribbon Kit- \$20.00



Pattern 2

Silk Ribbon Kit- \$19.00



Pattern 3

Silk Ribbon Kit- \$17.00



Pattern 4

Silk Ribbon Kit- \$16.00



Pattern 5

Silk Ribbon Kit- \$18.00



Pattern 7

Silk Ribbon Kit- \$20.00



Pattern 9

Silk Ribbon Kit- \$18.00



Pattern 11

Silk Ribbon Kit- \$19.00



Pattern 6

Silk Ribbon Kit- \$17.00



Pattern 8

Silk Ribbon Kit- \$18.00



Pattern 10

Silk Ribbon Kit- \$19.00



Pattern 12

Silk Ribbon Kit- \$19.00



Floral Portraits

Nine Botanical Album Blocks



Pattern 1

The "Language of Flowers" and the art of botanical illustrations were two very prominent interests for the ladies of the Victorian Era. These women were well versed on the meaningful and highly symbolic arrangements of flowers and would translate those "secret" messages into their other pastimes. Whether it was in their painting, embroidery or arranging a bouquet for an applique quilt, by combining a certain collection of flowers together, a private message could be sent to the recipient of these elegant tokens.

The nine bouquets in the collection are displayed in an elegant oval frame, topped with a bow and swag. Furthermore, there is a scalloped setting frame that surrounds the outside of each and creates a distinctive look to the design. Two different settings for the completed quilt are discussed in the pattern and instructions for either choice is included in every pattern. (*Finished block size 24"*.)

Individual Pattern Price: \$5.00 (*please specify pattern number*)

Complete Collection of Nine- \$40.00 (*one pattern free*)

This collection can be shipped as a
Block-of-the-Month selection at \$5.83/month (includes shipping)



Pattern 2



Pattern 3



Pattern 4



Pattern 5



Pattern 6



Pattern 7



Pattern 8



Pattern 9

Embellishing Baltimore Collection



Nine 24" Dimensional Album Patterns

Get ready for a wealth of stitching techniques that have been incorporated into this award winning Baltimore Album Quilt. Designed as a teaching tool, each of the nine album blocks focus on different dimensional applique flowers and silk ribbon stitches set among one of two complimentary beaded applique frames with a coordinated reverse applique feather motif. Patterns are full size and include templates, stitch guides and detailed instructions for all of the techniques!

Individual Block Patterns: \$7.00 each

(please specify pattern number)

Complete Collection (1- 9): \$50.00

*This collection is available as a
Block-of-the-Month selection
at \$7.83/month (including shipping)*



Album with Heart Wreath

Pattern 1

The album block focuses on reverse applique, beading and inking the album inset. Surrounding the album is a floral heart wreath containing dimensional silk fabric roses, flowers, and leaves accented with silk ribbon embroidered Bleeding Hearts and other flowers.



Traditional Basket

Pattern 2

The basket pattern creatively combines fabric bias strips with a metallic braid for an elegant look. The basket is brimming with a variety of dimensional fabric roses, flowers, and leaves accented with silk ribbon embroidered flowers and ferns.



Beaded Cornucopia

Pattern 3

The cornucopia features beaded applique, accomplished by beading and appliqueing at the same time. Fairly overflowing from this upright cornucopia are dimensional silk fabric roses, flowers, and leaves and elegantly surrounded by silk ribbon embroidered flowers and berries.



Georgian Manor House

Pattern 4

The manor house pattern incorporates applique with buttonhole stitch or Broderie Perse, beaded details, and working with specialty threads. The front of the home is landscaped with a colorful floral garden of silk ribbon embroidered flowers and shrubs.



Clipper Ship

Pattern 7

The clipper ship displays both stuffed and shaded applique for the sails, as well as extensive beaded embellishments. Decorating the area below the ship is a floral swag containing dimensional silk fabric roses, flowers, and leaves, with silk ribbon embroidered wheat and flowers.



Lyre with Open Wreath

Pattern 5

The lyre design combines reverse applique, beading and buttonhole stitch applique or Broderie Perse. Surrounding the lyre is an open wreath containing dimensional fabric roses, flowers, applique leaves and silk ribbon embroidered flowers.



Classic Urn

Pattern 8

This classic urn pattern has both reverse and cutwork applique with a unique calligraphy inset. The urn is blooming with a variety of dimensional fabric roses, flowers, and leaves with touches of silk ribbon embroidered daffodils among others.



Peacock with Floral Swag

Pattern 6

This peacock pattern has layered applique and a wonderful shirring technique for the tail with an optional shaded fabric technique. Decorating the area below the peacock is a floral swag containing dimensional fabric roses, flowers, and leaves with intricate silk ribbon embroidered flowers.



Blossoming Vase of Flowers

Pattern 9

The vase block includes both reverse and cutwork applique with an inked inset. The vase is in full bloom showcasing a variety of dimensional velvet fabric roses, flowers, and leaves accented with silk ribbon embroidered Forget-me-Knots, ferns and flowers.

Enduring Traditions

A Collection of Nine Album Patterns



Featuring Applique by Mary Anne Lipinski

The glorious tradition of Baltimore Album quilts is revisited in this distinctive design. Each of the nine, 22" album blocks are nestled in a wonderful framed setting, complete with a reverse applique accent. In addition, this particular quilt design incorporates a diamond sashing, (appliqued or pieced), between the blocks to create an original arrangement for the entire quilt. So, settle into a cozy corner with your favorite fabrics to applique this distinctive interpretation of tradition.

Pattern includes:

Supply List for one album block and/ or entire quilt

Full size pattern

Detailed instructions

Outer border suggestions



Pattern Price: \$5.00 (*please specify pattern number*)
Complete Collection (1-9): \$40.00 (*you get one free!*)

**This collection can be shipped as a
Block-of-the-Month selection at \$5.60/month (includes shipping)**



Pattern 1



Pattern 2



Pattern 7



Pattern 8



Pattern 3



Pattern 4



Pattern 9



Pattern 5



Pattern 6

Red and Green Folk Art Album



By far, my most popular pattern collection to date, each of these nine album blocks are 24", finished size. Part of it's charm is the unique setting~ a frame that features a reverse applique leaf and diamond motif. Each of the nine featured quilt blocks are loosely based on 19th century applique and embroidery designs. Choose all nine or maybe just four for an attractive wall-hanging.

Individual Patterns- \$5.00 (*please specify pattern number*)
Complete Collection- \$40.00 (*you are getting one pattern free!*)

This collection can be shipped as a **Block-of-the-Month** selection at
\$5.60/month (includes shipping)



Pattern 1



Pattern 2



Pattern 3



Pattern 4



Pattern 5



Pattern 6



Pattern 7



Pattern 8



Pattern 9



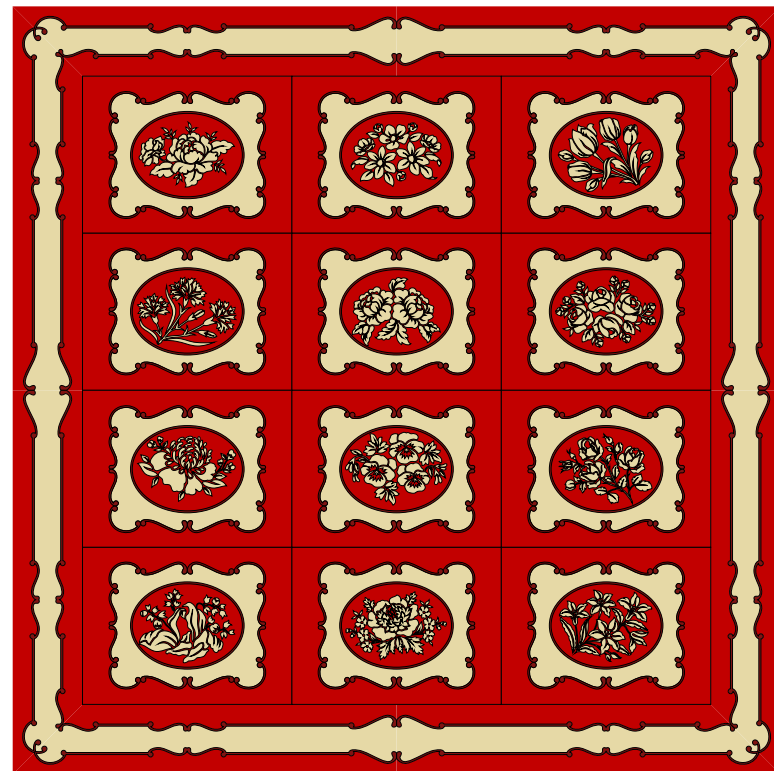
Romancing Redwork

*A Collection of Floral Album Blocks
and Decorative Pillows*



Pattern 1

Elegance and charm... Revisit the past with this delightful series of floral applique patterns. Each of the twelve, 18"x 24" quilt blocks in the collection showcases a different spray of "damask-like" bouquets, nestled inside of a coordinating fabric frame. Embellish these album blocks with "Redwork Embroidery" to enhance the center motif with texture, dimension, and more of an antique look. Or if you like- leave out the embroidery for a wonderful Victorian stenciled look.



Combine all the album blocks from the series into a quilted treasure complete with an outer appliqued quilt border, (pattern 13), or choose a few designs and make beautiful accent pillows for your home. The patterns include instructions for either choice, as well as, full size pattern sheets and stitching instructions.

Individual patterns- \$6.00 (*please specify pattern number*)

Complete collection (1-12)- \$60.00 includes border pattern

**This collection can be shipped as a
Block-of-the-Month selection at \$6.60/month (includes shipping)**



Romancing Redwork



Pattern 1



Pattern 2



Romancing Redwork



Pattern 7



Pattern 8



Pattern 3



Pattern 4



Pattern 9



Pattern 10



Pattern 5



Pattern 6



Pattern 11



Pattern 12





From the Heart

You have probably realized that Baltimore Album quilts are my passion. This 24" quilt block was one of my first designs inspired by those antique quilts. I am hoping it will delight any connoisseur of intricate applique. The reverse applique heart is a traditional motif, but it has been updated and framed with an arrangement of acanthus leaves and lattice work corners. Roses and a variety of other basic dimensional flower techniques are integrated into the design by overlapping the heart motif. The center is open for you to ink in your own monogram or a small saying of your choice. This quilt block would make the perfect center piece in your Baltimore Album quilt or easily add borders for a wonderful wall-hanging.

The full size pattern includes detailed instructions as well as templates for the flowers.

Pattern: \$7.00



Victorian Fan

This applique Victorian fan was meant as a companion piece to the pattern "From the Heart" but will work equally as well, all on its own. This intricate Baltimore Album inspired block will challenge any applique lover with its intricate cutwork applique. The fan is a unique motif for Baltimore Album quilts but will coordinate well with the antique style.

This 24" square album block is delicately framed with a lovely arrangement of acanthus leaves and lattice work corners. The bouquet of flowers are arranged over top of this ornamental fan and include a few basic dimensional applique techniques. Create this showpiece for the center medallion of your album quilt or just add a border for a wonderful wall hanging.

Full size pattern as well as templates for the flowers and detailed instructions are included.

Pattern: \$7.00

Inspiring My Heart



Photo quilt created by Mary Anne Lipinski

Inspired by the wonderful Victorian mansions in Cape May, New Jersey, this delightful wallhanging design has the ambiance of that gracious era. By combining the style of Baltimore Album with the gingerbread from Victorian houses this 50" x 50" quilt is brimming with ornamental charm. The wreath is laden with dimensional applique and silk ribbon embroidered flowers and leaves and the heart inset leaves you ample space to ink your own inspirational message.

Included in this pattern are:

- ✧ Supply list
- ✧ Full size patterns
- ✧ Detailed, step by step, instructions and clear illustrations for making the quilt
- ✧ Actual size templates for all dimensional flowers
- ✧ Complete stitch guides for all of the embroidery stitches

Pattern: \$15.00

Tokens of Love



A Dimensional Victorian Calling Card Collection

Ah..., you knew I couldn't resist. With the proliferation of calling card designs there were many more just crying out to be done with lovely silk fabrics, silk ribbons and the beading that I can't put down. This series of patterns will eventually have a completely new set of motifs, not to be confused with the original *Victorian Calling Card Collection*. These "Tokens of Love" will be full of dimensional silk roses, velvet flowers and a profusion of silk ribbon embroidered ferns and flowers as well as beading and other embellishments.

I am prematurely releasing this, the first block in this series, although I am not ready to release any of the other patterns in this collection. My intention is to have sixteen of these dimensional album block patterns and a medallion center design in this anticipated quilt. Each block will make a 16" finished quilt square with a 12" x 7" scalloped edge calling card, "mounted" in the center. As always, each pattern in this collection will have full size patterns and extensive instructions that explain how to make every stitch in the design.

By the way, this block looks wonderful, on its own, displayed in an 11" x 14" frame!

Pattern: \$7.00

(Please watch my website for new releases in this pattern collection.)



Elaborate gold lame reverse applique corners surround this award winning, 47" x 47", Victorian style wallhanging. It is just overflowing with elegance and was featured in Elly Sienkiewicz's, "Dimensional Applique" book. The scherenschnitte fan designs are gold lame fused into place and delicately edged with lace, beads and rhinestones for that added sparkle. The dimensional silk flower bouquets add color and enhance the intricate inked sentiment featured in the center of the quilt.

Applique fans are sure to find this quilt a rewarding challenge.

Pattern : \$15.00



The pattern package includes full size pattern sheets for the quilt including the calligraphy design. In addition, all of the various applique and dimensional techniques such as the flowers and beaded applique, (beading and applique at the same time) shown in the quilt are explained with complete detailed instructions.





Jennifer Buechel



6496 Simmons Ave.

South Park, LA 15129

Phone: 412-835-0916
Fax: 412-835-5403

Phone: 412-835-0916
Fax: 412-835-5403

www.ornementalapplique.com

jeni@ornamentalapplique.com

- Please print all information clearly and completely.
- Always include your phone number or e-mail address in case I need to contact you about your order.
- Return check fee- \$30.00
- Include the shipping and handling charges from the chart
- International customers add 20% to the merchandise total for extra shipping and handling costs.
- If you have any questions about your order or the patterns please feel free to contact me.
- All Sales are Final.

Retail Order Form

Date _____

☐ Check here to give authorization to automatically charge your credit card monthly for your Block-of-the-Month selection

[illegible]

Shipping and Handling Cost:

Single Pattern *only*: \$ 0.83

Multiple Items:

\$0.00- \$20.00

\$20.01- \$50.00

~~\$50.00-~~ \$100.00

\$100.00 and up

COD orders add \$7.00

Shipping Cost:

\$2.00

\$4.50

\$6.50

\$9.00

Subtotal

Pa Residents add 7% Sales Tax

Shipping and Handling

Additional Shipping Charges

Total Due

***Thank you for your order
and always feel free to contact
me with any questions!***